

CHITA®

CHITA®

Assembly Manual

Delaney Collection

Modular Sofa

Console

Follow Us



@chitalivingofficial



@chitaliving



@chitaliving



@chitaliving

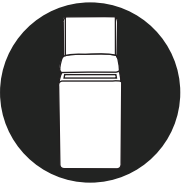
If at any step you need a helping hand, we're always here for you. You can email us, or hop into a live chat on our website — whatever method is convenient for you.

✉ support@chitaliving.com

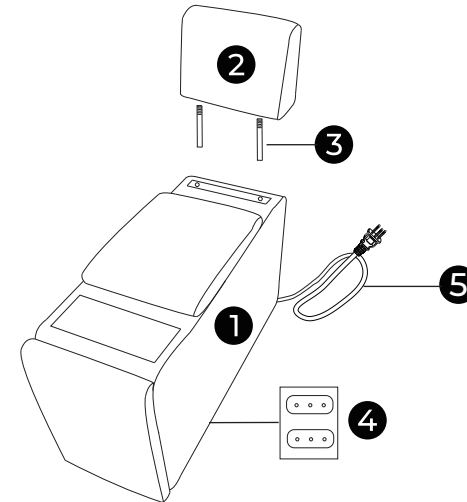
Thank you for purchasing from CHITA LIVING. Please read this manual carefully before using and keep this manual for future reference.

The design and/or specification of this product is subject to change without notice.

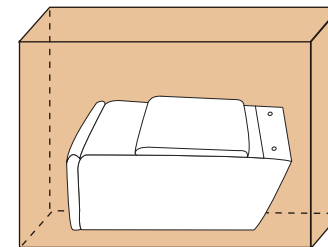
Console



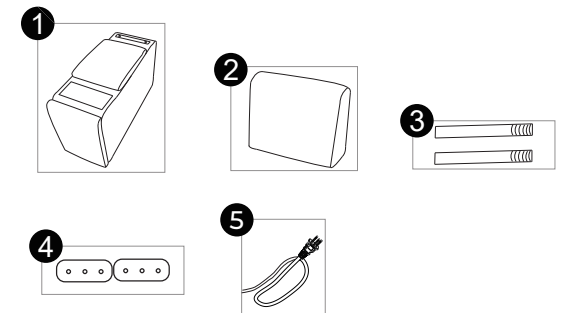
Parts



- 1 Console Body
- 2 Console Back
- 3 Round Bolt x 2
- 4 Connector x 2
- 5 Power Cord

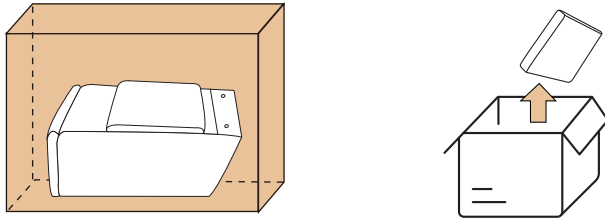


Console
PIECES INCLUDED AS BELOW



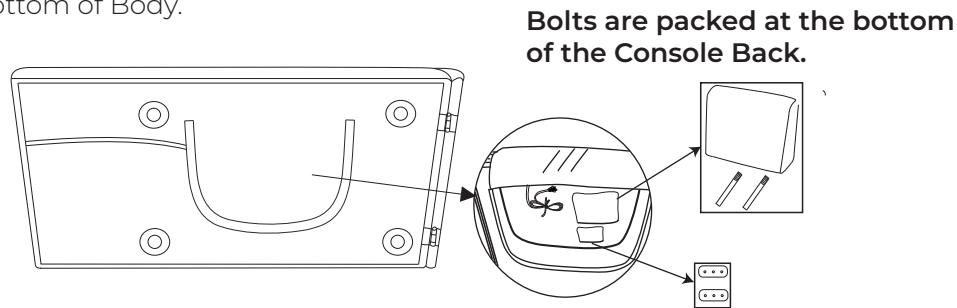
Step 1

Take out the Console Body from Box.



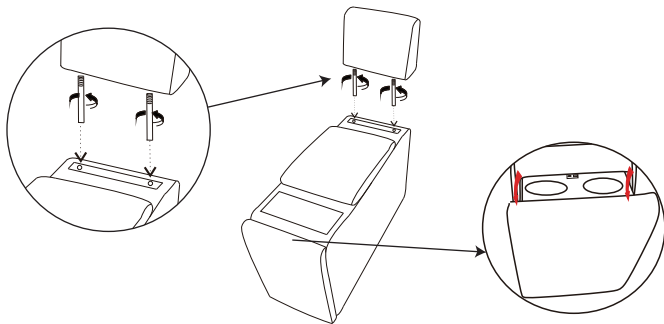
Step 2

Take out the Console Back, Round Bolts, Connectors and Power Cord from the bottom of Body.



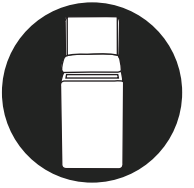
Step 3

Screw the two Round Bolts into the Backrest and then insert it downward into the Console Body tightly. The cup holders can be pulled out on the front when needed.



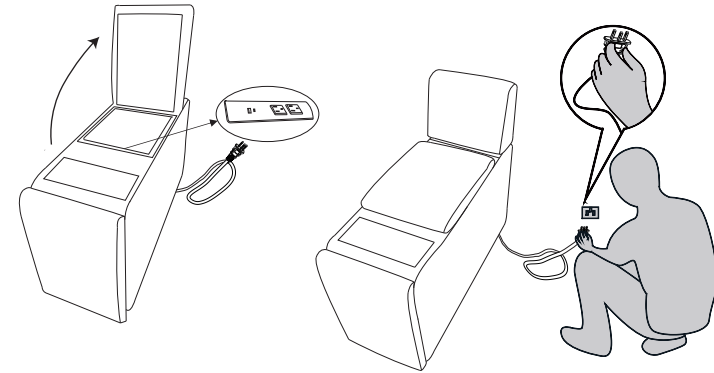
Assembly Manual

Console



Step 4

Plug the Power Cord into the power outlet carefully.



Congratulations!
Console is ready!

How to connect with others?

Attach the Metal Connectors by screwing on the legs firmly. You may have a few extra Metal Connectors left over. They are included in case you want to connect additional modules in the future. We recommend storing them in the little zip-top bag in case you decide to expand your Delaney later.

Note: Ottoman is a standalone piece and cannot be attached to any chair with Metal Connectors.

