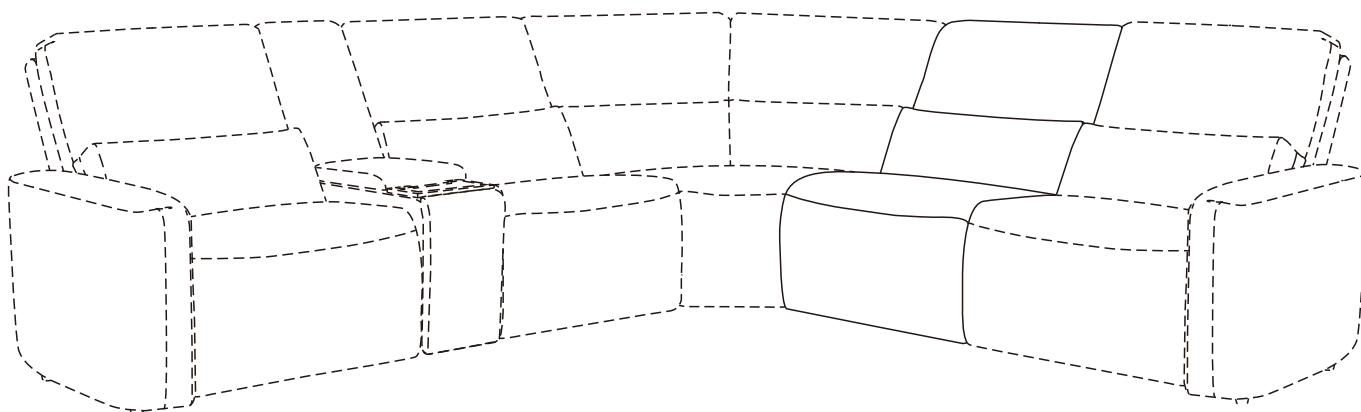


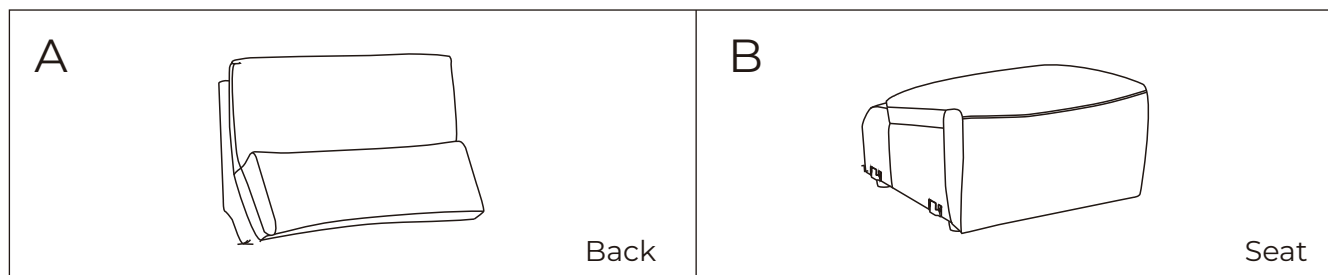
## Armless Chair Zenith Collection **Assembly Manual**



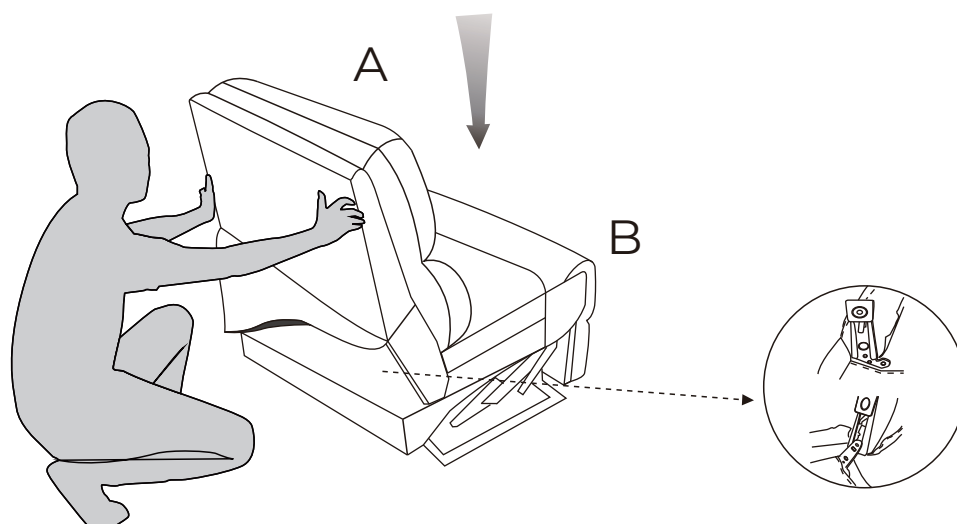
### **CAUTION**

THIS ASSEMBLY MANUAL CONTAINS IMPORTANT SAFETY INFORMATION.  
PLEASE READ AND KEEP FOR FUTURE REFERENCE.

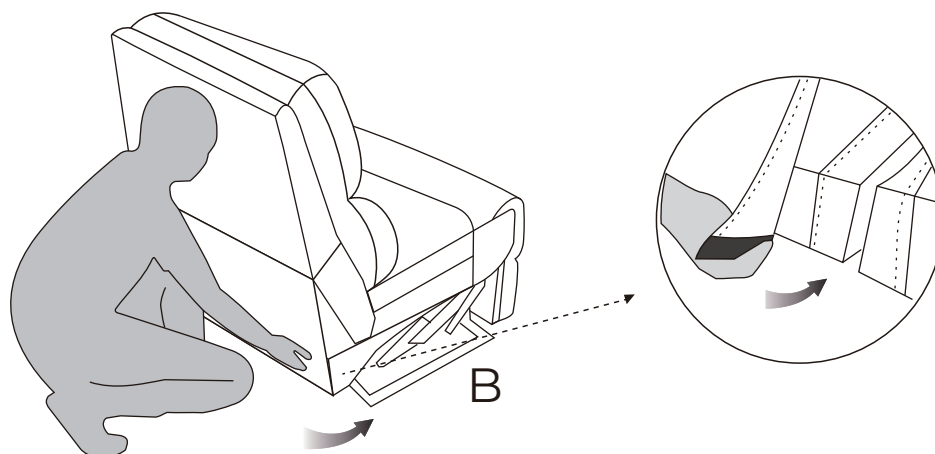
## Parts



**Step 1: Slide the Back (A) into the metallic quick connectors of the Seat (B). Push down the Back (A) firmly until each side is locked into place and an audible “click” is heard.**

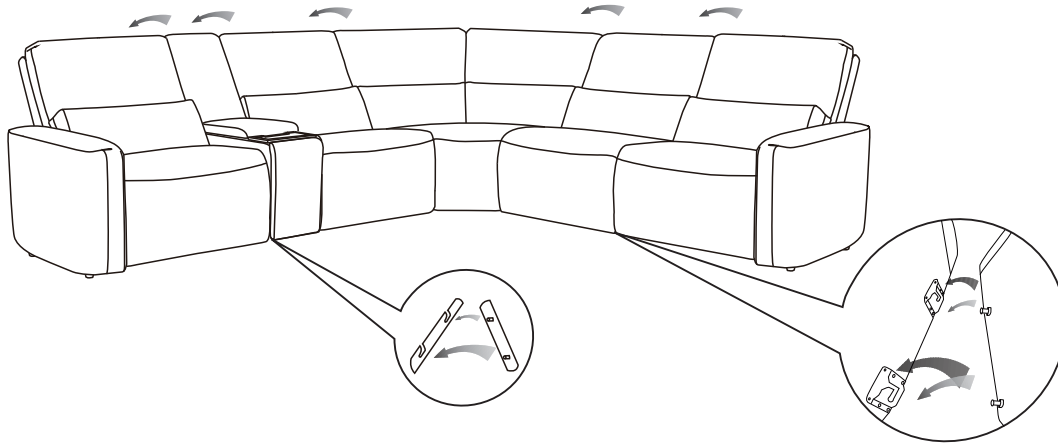


**Step 2: Attach the back cover to the bottom of the Seat (B) with Velcro.**

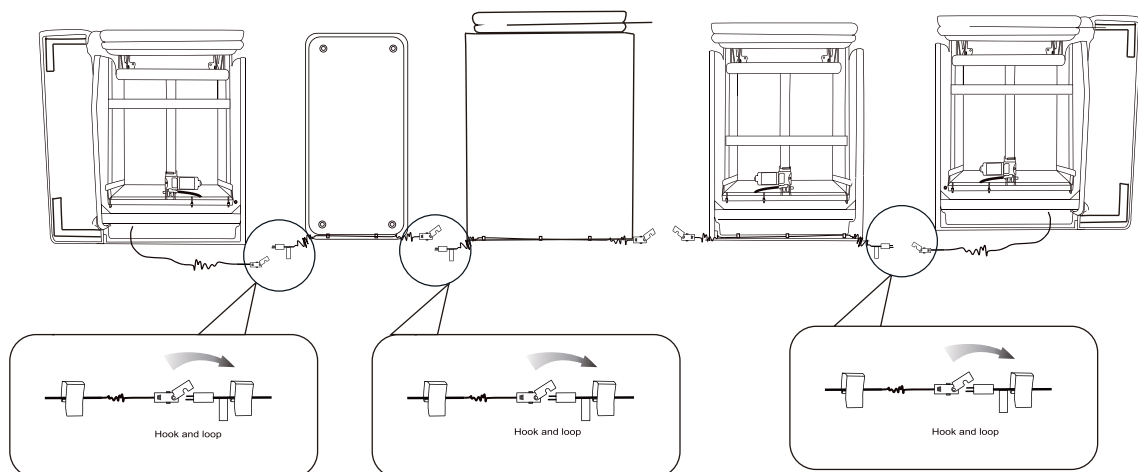


## How to Connect

**Step 1: Attach each piece with brackets on the side.**



**Step 2: Connect the wire piece by piece.**



**Step 3: Connect one end of the Power cord into the DC adaptor located at the back of the seat. Plug the other end of power cord into the power outlet.**

**Note: After all the connections are made, the green LED will be lit up.**

