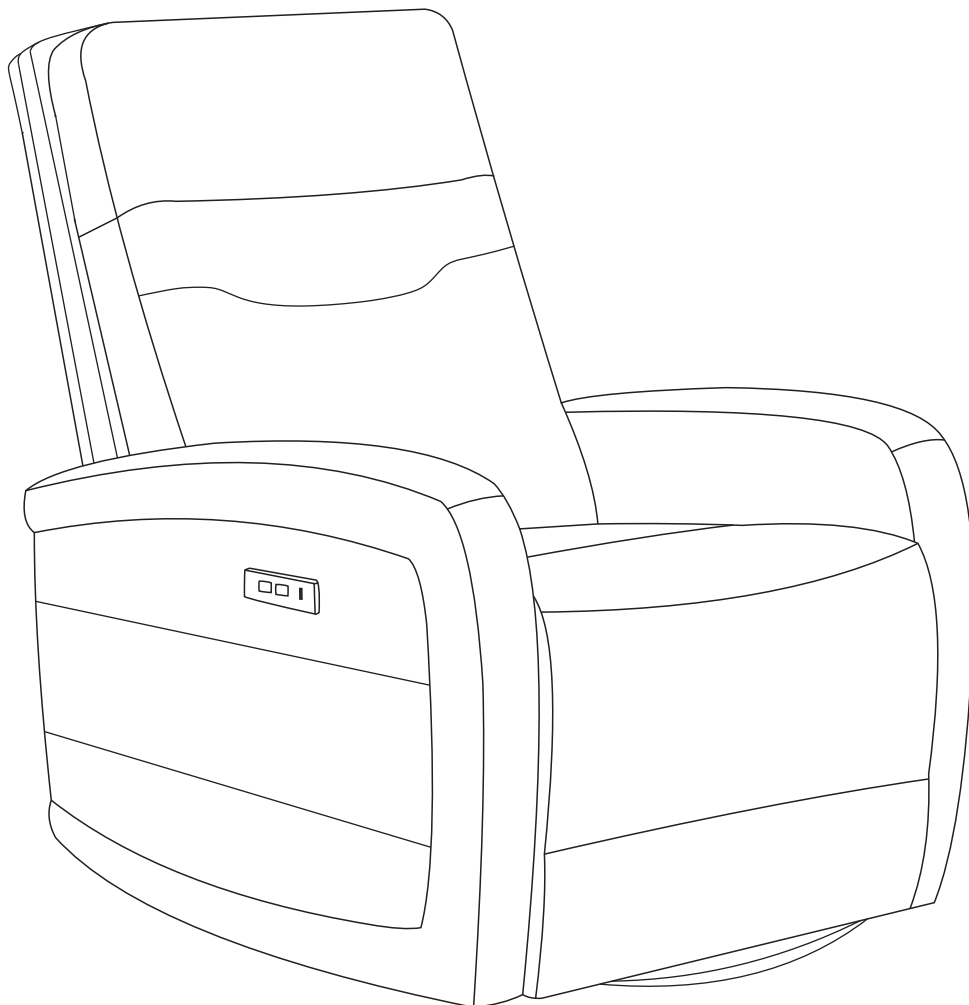


Power Recliner with Swivel and Glider

Assembly Manual

ME7A130

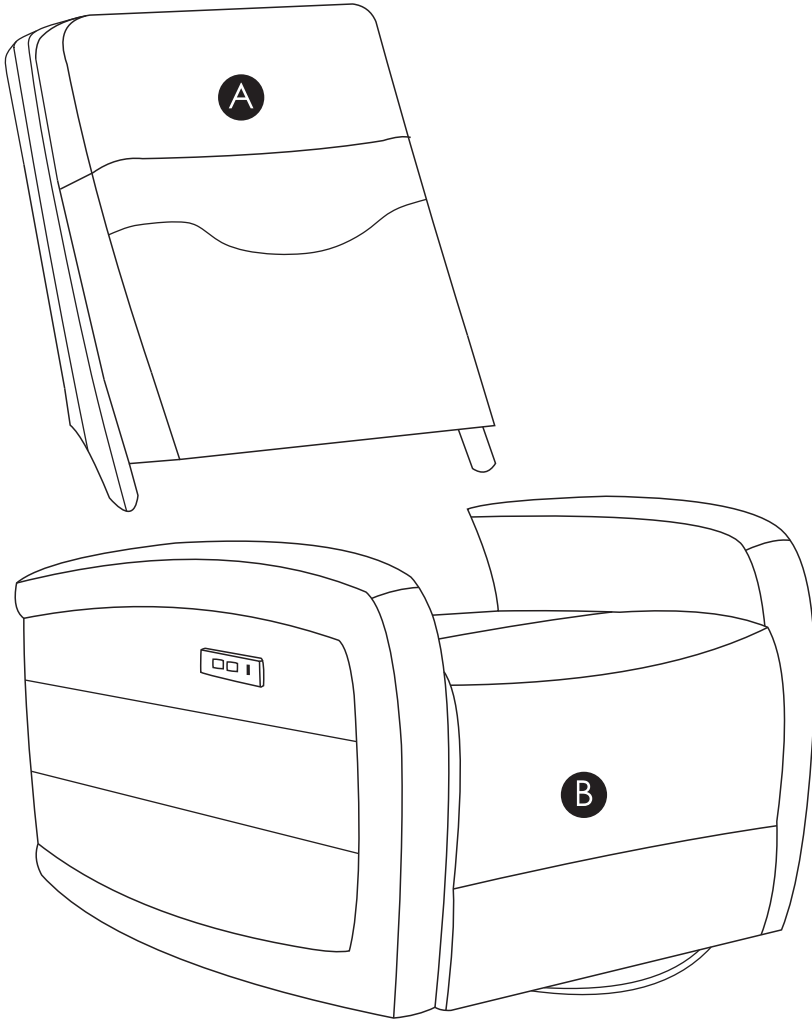


▲ CAUTION

THIS ASSEMBLY MANUAL CONTAINS IMPORTANT SAFETY INFORMATION.

PLEASE READ AND KEEP FOR FUTURE REFERENCE.

COMPONENTS

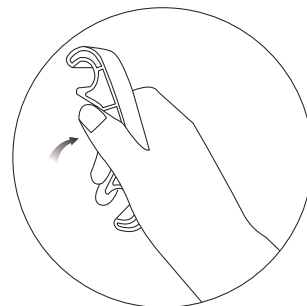
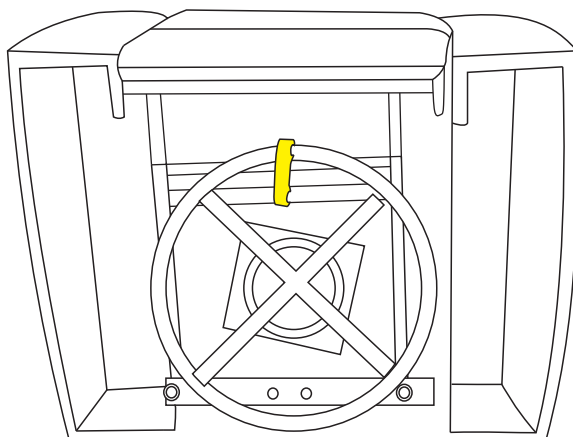


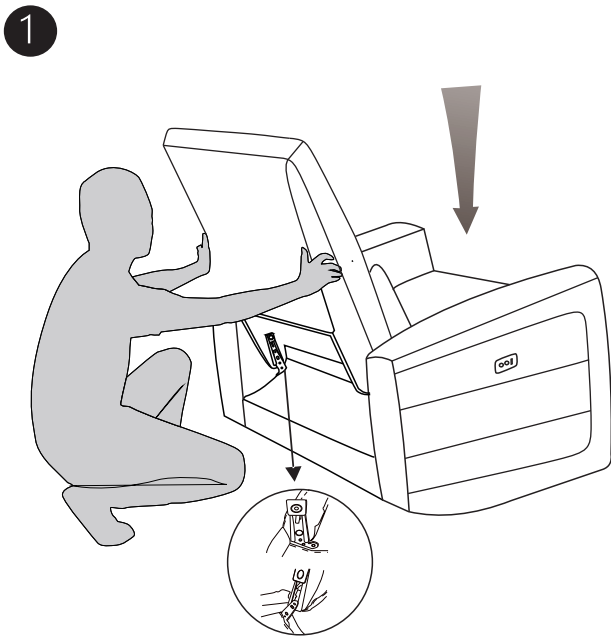
A Chair Back
1X

B Chair Base
1X

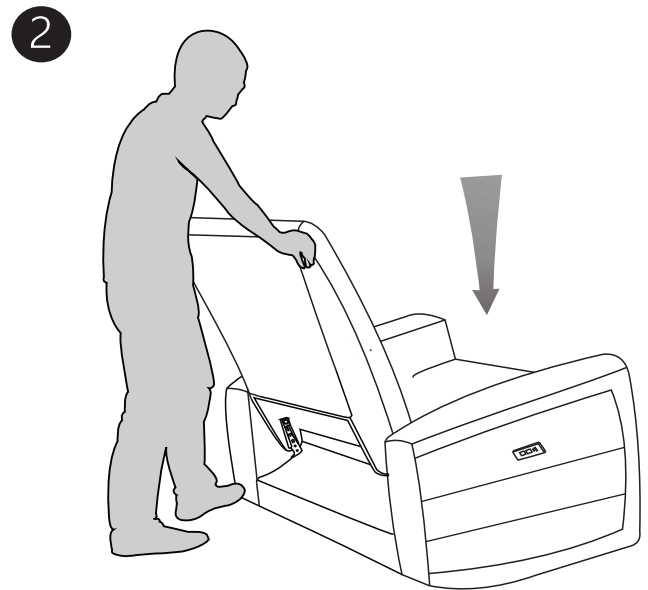
WARNING

Find a yellow protector at the bottom of the seat, then remove it before using.





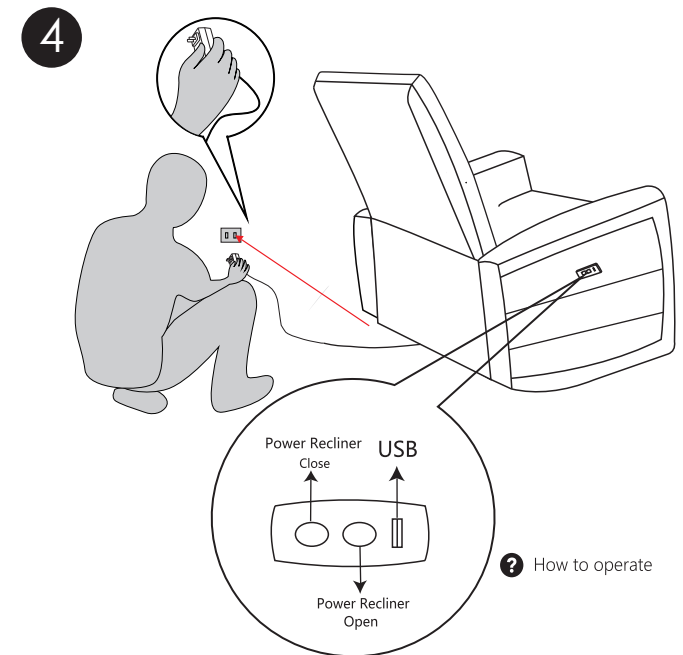
Slide the back into the metallic quick connectors of the base.



Push down the back firmly until each side is locked into place and an audible "click" is heard.



Attach the back cover to the bottom of the seat with Velcro.



Put the plug into the power outlet.