

CHITA®

CHITA®

Assembly Manual

Delaney Collection

Modular Sofa



Follow Us

 @chitalivingofficial

 @chitaliving

 @chitaliving

 @chitaliving

If at any step you need a helping hand, we're always here for you. You can email us, or hop into a live chat on our website — whatever method is convenient for you.

 support@chitaliving.com

Thank you for purchasing from CHITA LIVING. Please read this manual carefully before using and keep this manual for future reference.

The design and/or specification of this product is subject to change without notice.

Welcome to CHITA LIVING

If you are reading these instructions, the hard part is already out of the way. Surrounded by all these boxes, you may feel a little overwhelmed. No worries, we will walk you through and you will find the assembly process easy, intuitive and mostly, fun. Here are some tips before you get started.

1. Count the boxes. Check if you have received all boxes using the diagram on next page. Do not start the assembly process until all boxes are present. If you have not received all boxes or received wrong boxes, please contact our customer service at support@chitaliving.com and we will get back to you. Do not discard any of the packaging until you are certain that you have all the necessary parts for the assembly.
2. Do not open all boxes at once. Start with Arms Box and Left Seat & Backrest Box to assemble the Left Armchair. Then, move on to open the Right Seat & Backrest Box to assemble the Right Armchair. Next, assemble the Armless Chair, and finally, the Ottoman.
3. After the assembly is complete, feel free to enjoy your Delaney Collection as much as you can. However, please ensure that the packaging is disposed of in a safe and environmentally responsible way.
4. For your safety (as well as Delaney's), do not sit on the backrest during and after assembly and never use this sofa as a step ladder.

! Do not start the assembly process until all boxes are present.

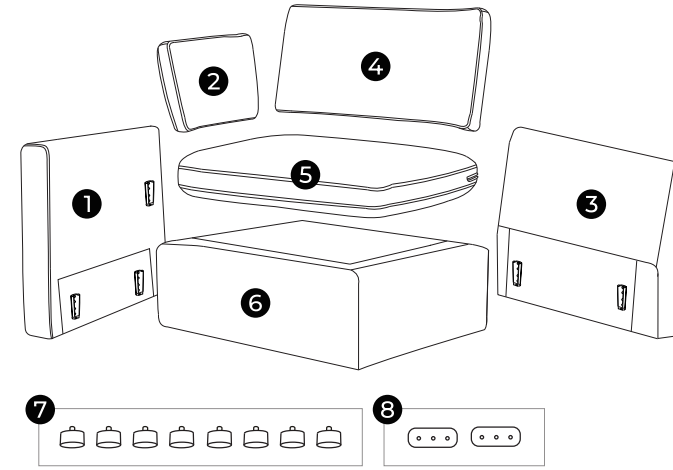
Assembly Manual

Left Armchair

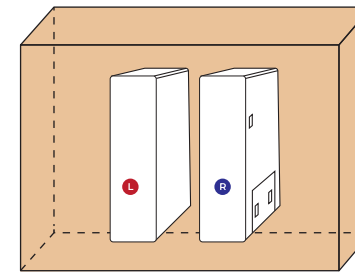


<p>2-piece Armless</p>	<p>Box × 2</p> <p>Armless Chair Armless Chair</p>
<p>2-piece</p>	<p>Box × 3</p> <p>Arms Left Seat & Backrest Right Seat & Backrest</p>
<p>3-piece</p>	<p>Box × 4</p> <p>Arms Left Seat & Backrest Right Seat & Backrest Armless Chair</p>
<p>4-piece</p>	<p>Box × 5</p> <p>Arms Left Seat & Backrest Right Seat & Backrest Ottoman</p> <p>Armless Chair</p>
<p>5-piece</p>	<p>Box × 6</p> <p>Arms Left Seat & Backrest Right Seat & Backrest Armless Chair</p> <p>Ottoman Ottoman</p>
<p>6-piece</p>	<p>Box × 7</p> <p>Arms Left Seat & Backrest Right Seat & Backrest</p> <p>Armless Chair Armless Chair Ottoman Ottoman</p>

Parts



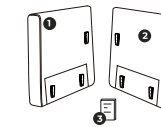
- 1 Left Arm
- 2 Arm Pillow
- 3 Left Backrest
- 4 Back Cushion
- 5 Seat Cushion
- 6 Left Seat Base
- 7 Leg × 8
- 8 Connector x 2



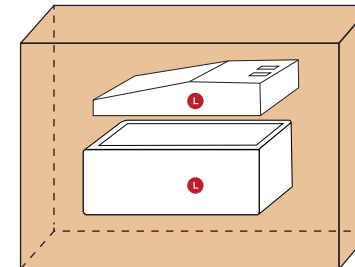
Note: Left & Right Arms are packed together in Arms Box.



Arms PIECES INCLUDED



- 1 Left Arm x 1
- 2 Right Arm x 1
- 3 Assembly Manual x 1



Left Seat & Backrest PIECES INCLUDED



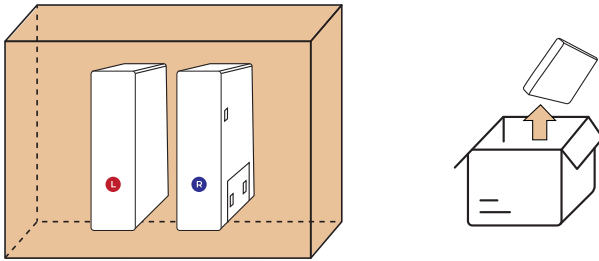
- 1 Backrest x 1
- 2 Back Cushion x 1
- 3 Seat Cushion x 1
- 4 Seat Base x 1
- 5 Arm Pillow x 1
- 6 Leg x 8
- 7 Connector x 2

Assembly Manual

Left Armchair

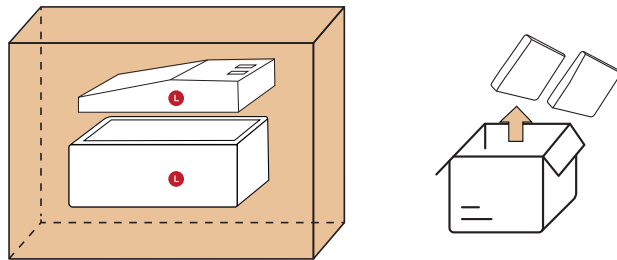
Step 1

Take out the Left Arm (L) from Arms Box.



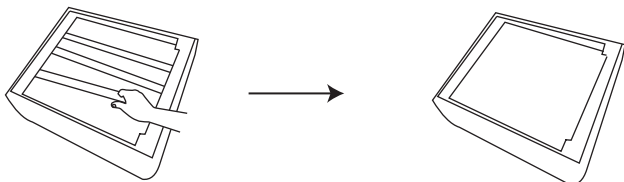
Step 2

Take out the Left Seat and Backrest from Left Seat & Backrest Box.



Step 3

Remove the three wood sticks at the base of the seat to take out the Seat Cushion, Back Cushion, Arm Pillow, and Metal Connectors (2 pieces). ⚠ Remove the sticks one by one. Push the stick down and rotate it towards the corner of the base and pull it out. Once all sticks are out, take out the cushions carefully.

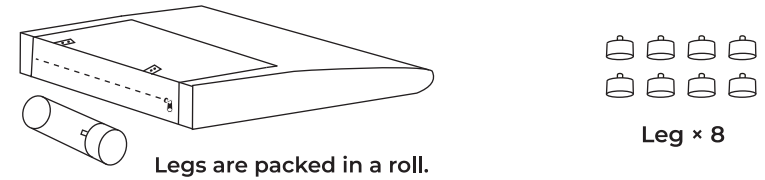


Assembly Manual

Left Armchair

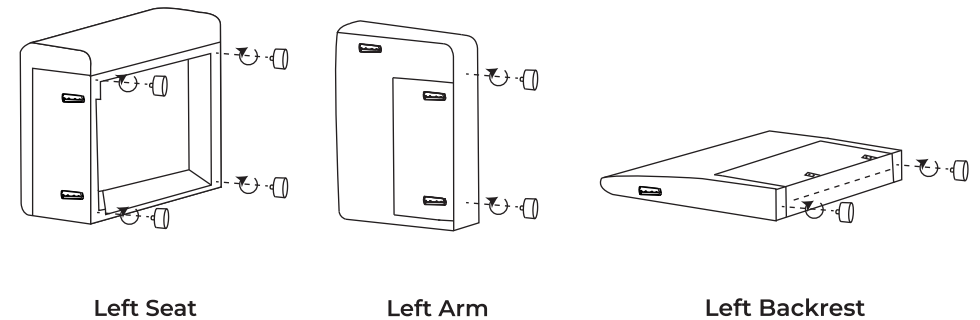
Step 4

Take out the Legs (8 pieces) from the bottom of the Backrest.



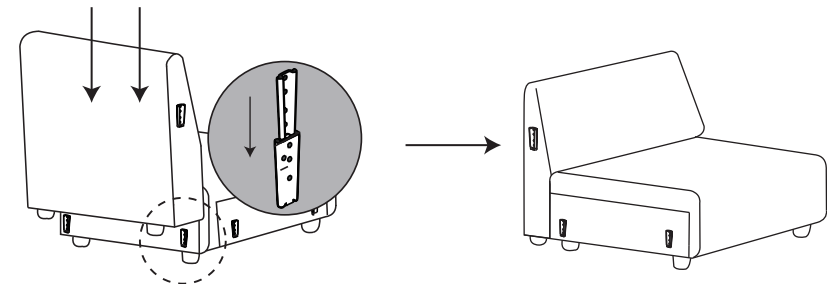
Step 5

Rotate the Legs firmly.



Step 6

Slide the Left Backrest into the Left Seat.

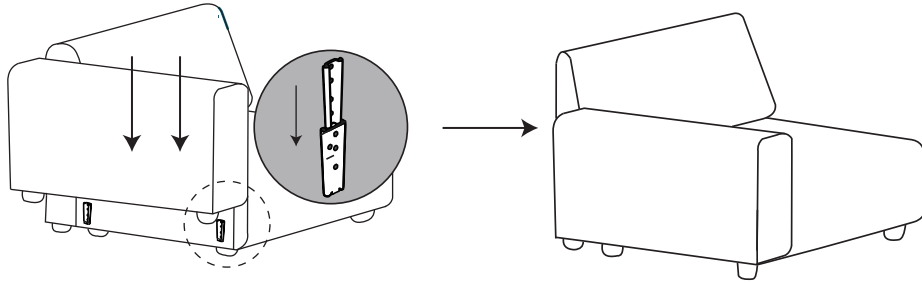


Assembly Manual

Left Armchair

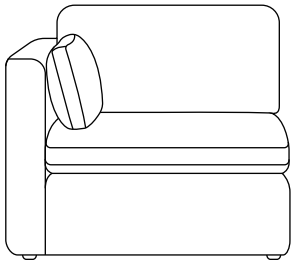
Step 7

Slide the Left Arm into the Left Seat and Backrest.



Step 8

Fluff the Seat Cushion, Back Cushion, and Arm Pillow, and put them on the chair to complete the assembly of your Left Armchair.



Congratulations!
Left Armchair is ready!

Tips

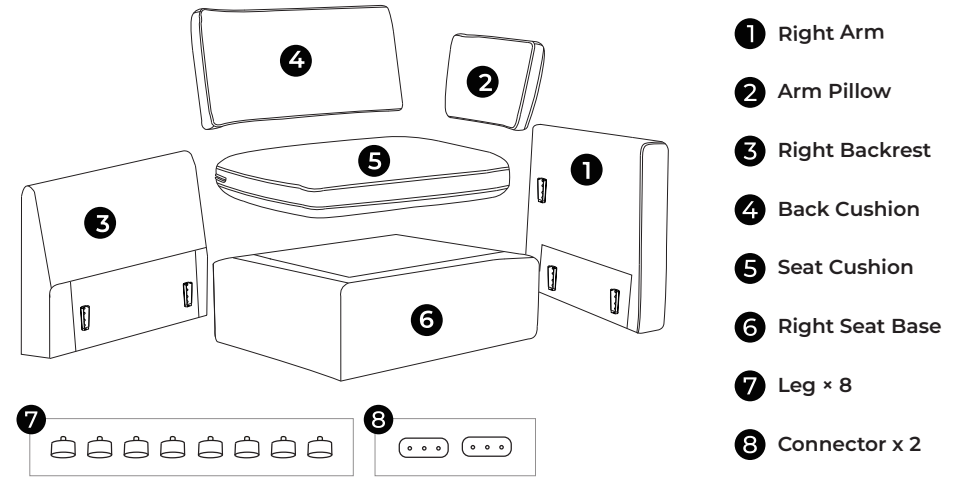
For now, please keep the Metal Connectors aside and you may need them after you have completed the assembly of all modules (See Page 18 to 20 for details).

Assembly Manual

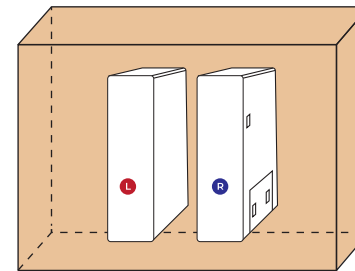
Right Armchair



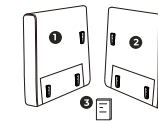
Parts



- 1 Right Arm
- 2 Arm Pillow
- 3 Right Backrest
- 4 Back Cushion
- 5 Seat Cushion
- 6 Right Seat Base
- 7 Leg x 8
- 8 Connector x 2

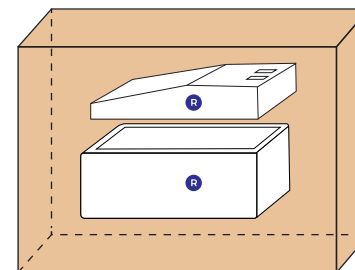


Arms PIECES INCLUDED

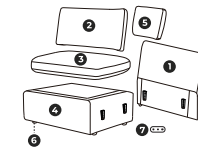


- 1 Left Arm x 1
- 2 Right Arm x 1
- 3 Assembly Manual x 1

Note: Left & Right Arms are packed together in Arms Box.



Right Seat & Backrest PIECES INCLUDED

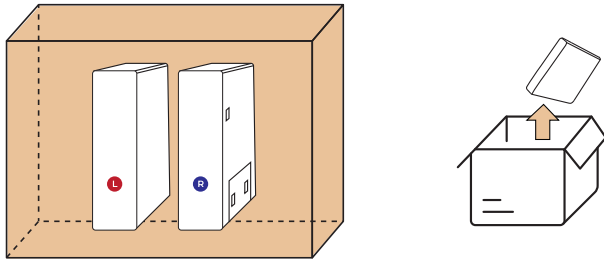


- 1 Backrest x 1
- 2 Back Cushion x 1
- 3 Seat Cushion x 1
- 4 Seat Base x 1
- 5 Arm Pillow x 1
- 6 Leg x 8
- 7 Connector x 2

Right Armchair

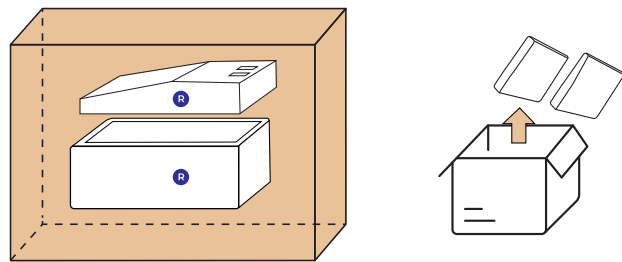
Step 1

Take out the Right Arm (R) from Arms Box.



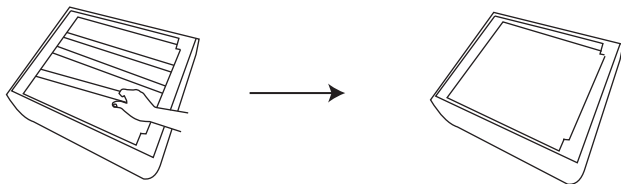
Step 2

Take out the Right Seat and Backrest from Right Seat & Backrest Box.



Step 3

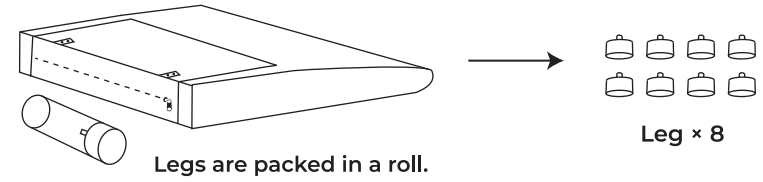
Remove the three wood sticks at the base of the seat to take out the Seat Cushion, Back Cushion, Arm Pillow, and Metal Connectors (2 pieces). ⚠ Remove the sticks one by one. Push the stick down and rotate it towards the corner of the base and pull it out. Once all sticks are out, take out the cushions carefully.



Right Armchair

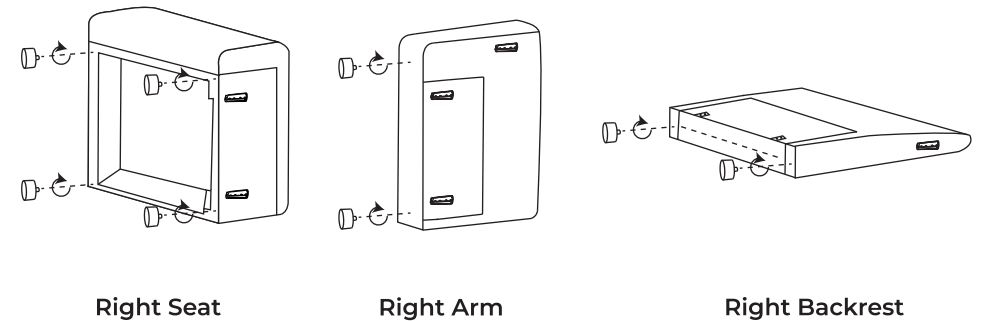
Step 4

Take out the Legs (8 pieces) from the bottom of the Backrest.



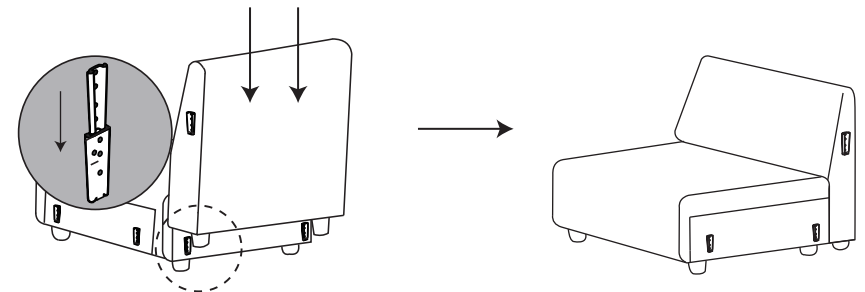
Step 5

Rotate the Legs firmly.



Step 6

Slide the Right Backrest into the Right Seat.

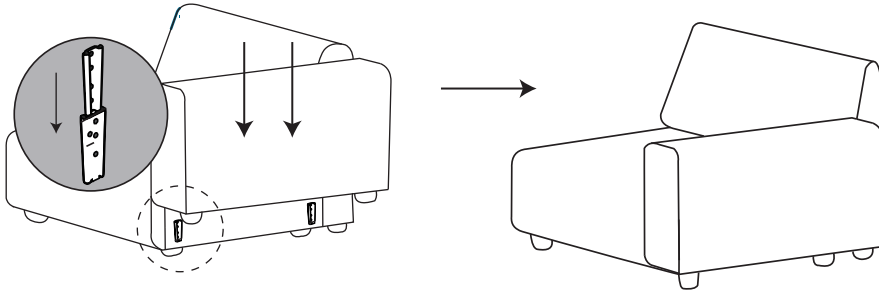


Assembly Manual

Right Armchair

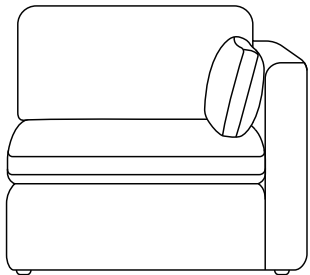
Step 7

Slide the Right Arm into the Right Seat and Backrest.



Step 8

Fluff the Seat Cushion, Back Cushion, and Arm Pillow, and put them on the chair to complete the assembly of your Right Armchair.



Congratulations!
Right Armchair is ready!

Tips

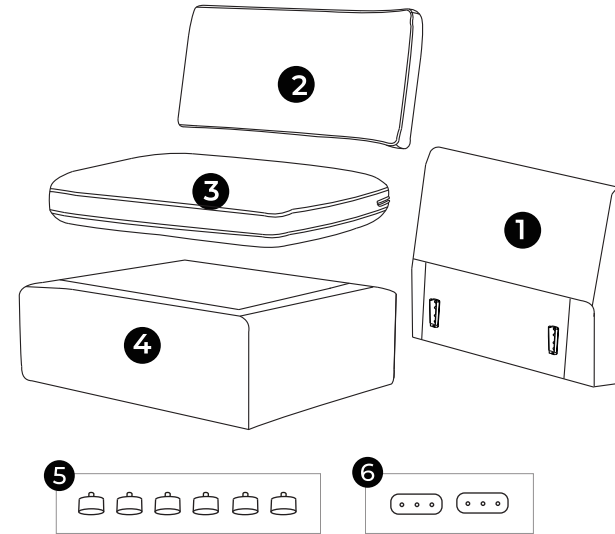
For now, please keep the Metal Connectors aside and you may need them after you have completed the assembly of all modules (See Page 18 to 20 for details).

Assembly Manual

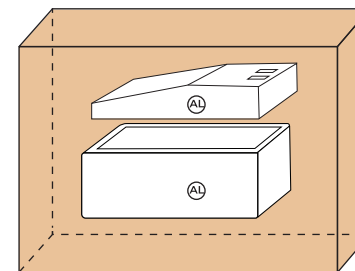
Armless Chair



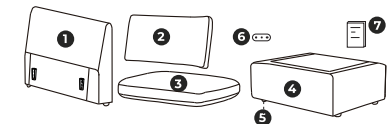
Parts



- ① Backrest
- ② Back Cushion
- ③ Seat Cushion
- ④ Seat Base
- ⑤ Leg x 6
- ⑥ Connector x 2



Armless Chair
PIECES INCLUDED



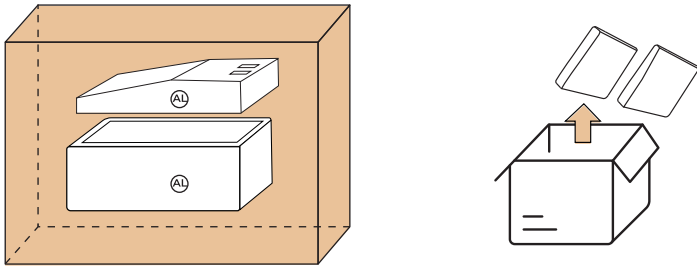
- ① Backrest x 1
- ② Back Cushion x 1
- ③ Seat Cushion x 1
- ④ Seat Base x 1
- ⑤ Leg x 6
- ⑥ Connector x 2
- ⑦ Assembly Manual x 1

Assembly Manual

Armless Chair

Step 1

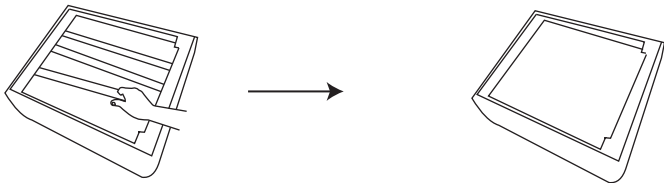
Take out the Seat and Backrest from Armless Box.



Step 2

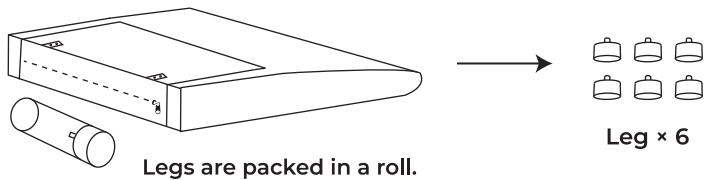
Remove the three wood sticks at the base of the seat to take out the Seat Cushion, Back Cushion, and Metal Connectors (2 pieces).

⚠ Remove the sticks one by one. Push the stick down and rotate it towards the corner of the base and pull it out. Once all sticks are out, take out the cushions carefully.



Step 3

Take out the Legs (6 pieces) from the bottom of the Backrest.

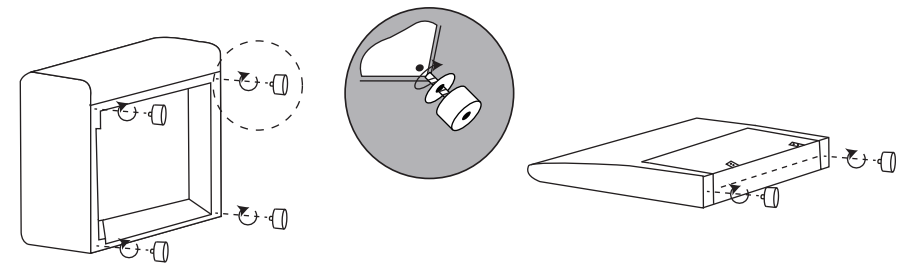


Assembly Manual

Armless Chair

Step 4

Rotate the Legs firmly.

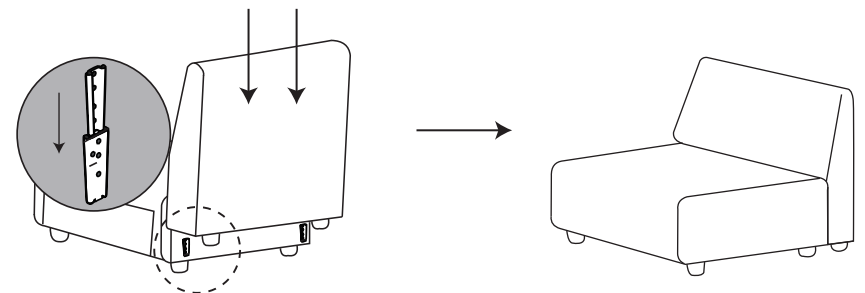


Seat Base

Backrest

Step 5

Slide the Backrest into the Seat.

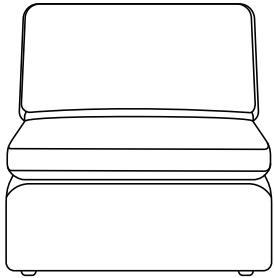


Assembly Manual

Armless Chair

Step 6

Fluff the Seat Cushion and Back Cushion. Put them on the chair to complete the assembly of your Armless Chair.



Congratulations!
Armless Chair is ready!

Tips

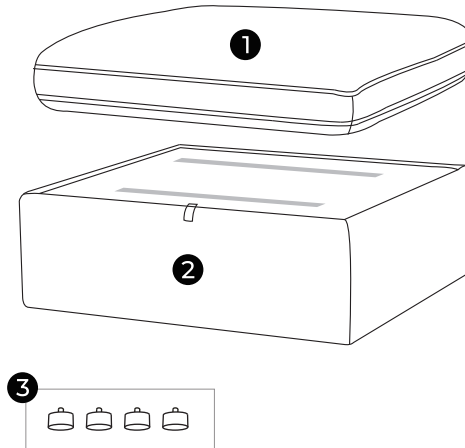
For now, please keep the Metal Connectors aside and you may need them after you have completed the assembly of all modules (See page 18 to 20 for details).

Assembly Manual

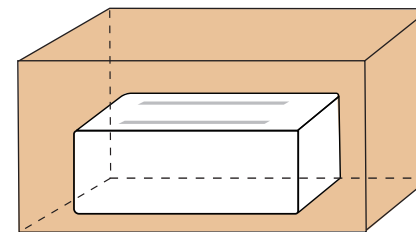
Ottoman



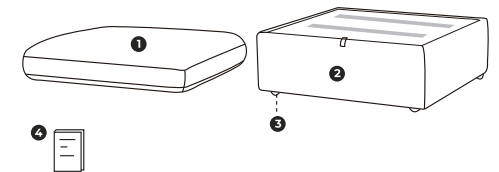
Parts



- 1 Seat Cushion
- 2 Seat Base
- 3 Leg x 4



Ottoman
PIECES INCLUDED



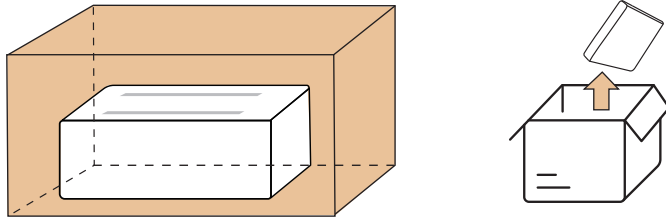
- 1 Seat Cushion x 1
- 2 Seat Base x 1
- 3 Leg x 4
- 4 Assembly Manual x 1

Assembly Manual

Ottoman

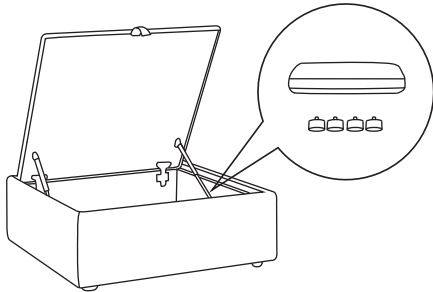
Step 1

Take out the Seat Base from Ottoman Box.



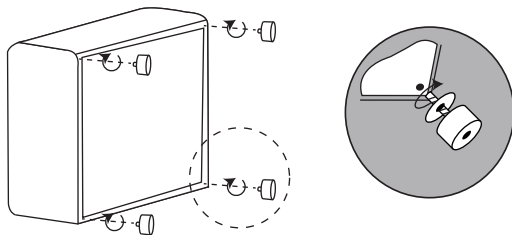
Step 2

Lift up the lid of the storage to take out Seat Cushion and Legs (4 pieces).



Step 3

Rotate the Legs firmly.

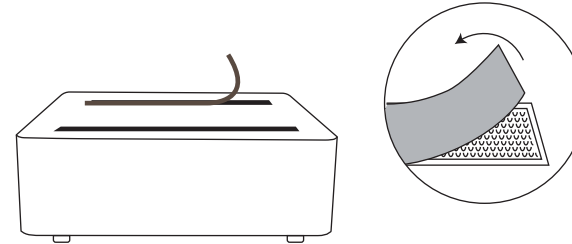


Assembly Manual

Ottoman

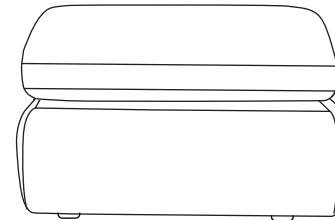
Step 4

Remove the velcro protectors on the top of the Seat.



Step 5

Fluff the Seat Cushion. Attach it to the Seat Base to complete the assembly of your Ottoman.



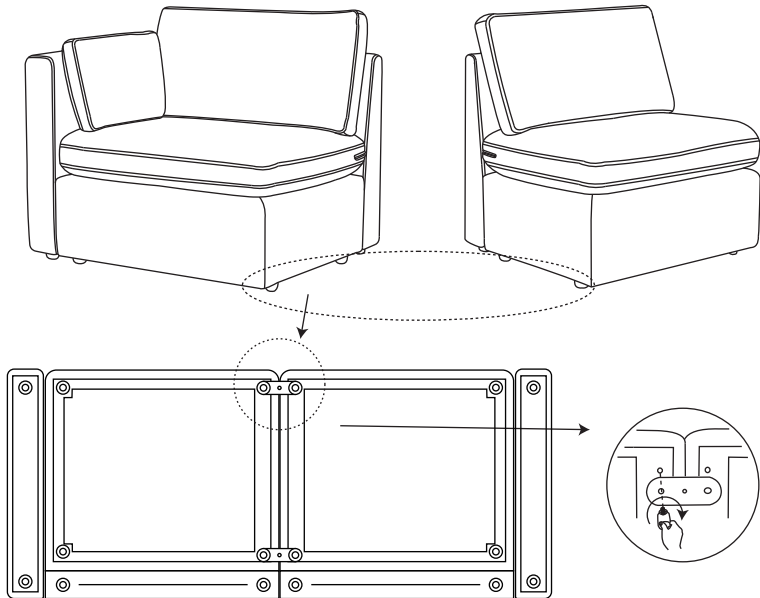
Congratulations!
Ottoman is ready!

Bonus Feature

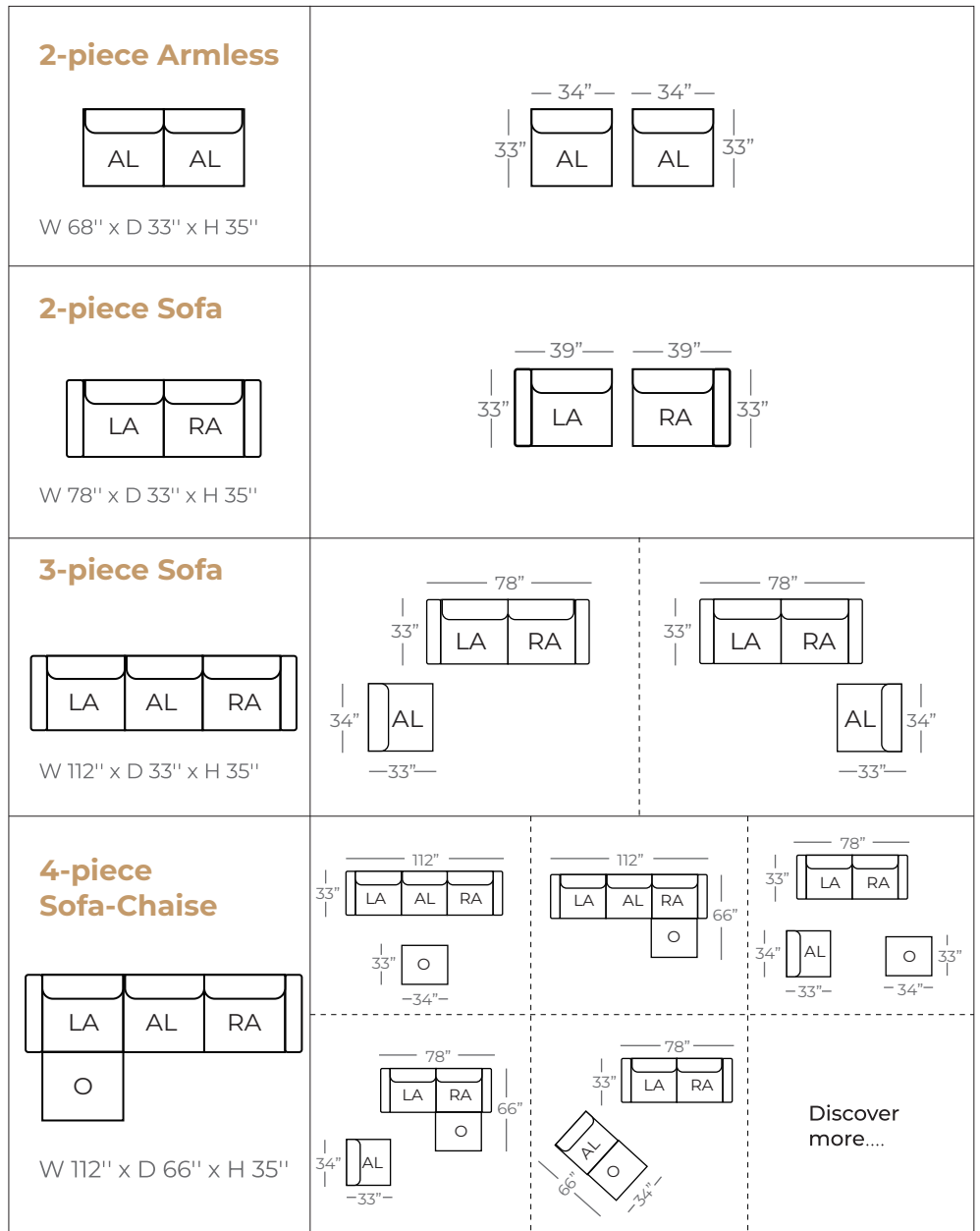
Now you have successfully completed the assembly of each module. Based on the number of modules you purchased, you may remix your Delaney in multiple configurations. In the diagrams on following pages, there are several configurations for your reference. After you decide which configuration you love the most, you may connect the chairs with Metal Connectors. In addition to non-slip legs, these Metal Connectors are provided to further help prevent the chairs from sliding apart.

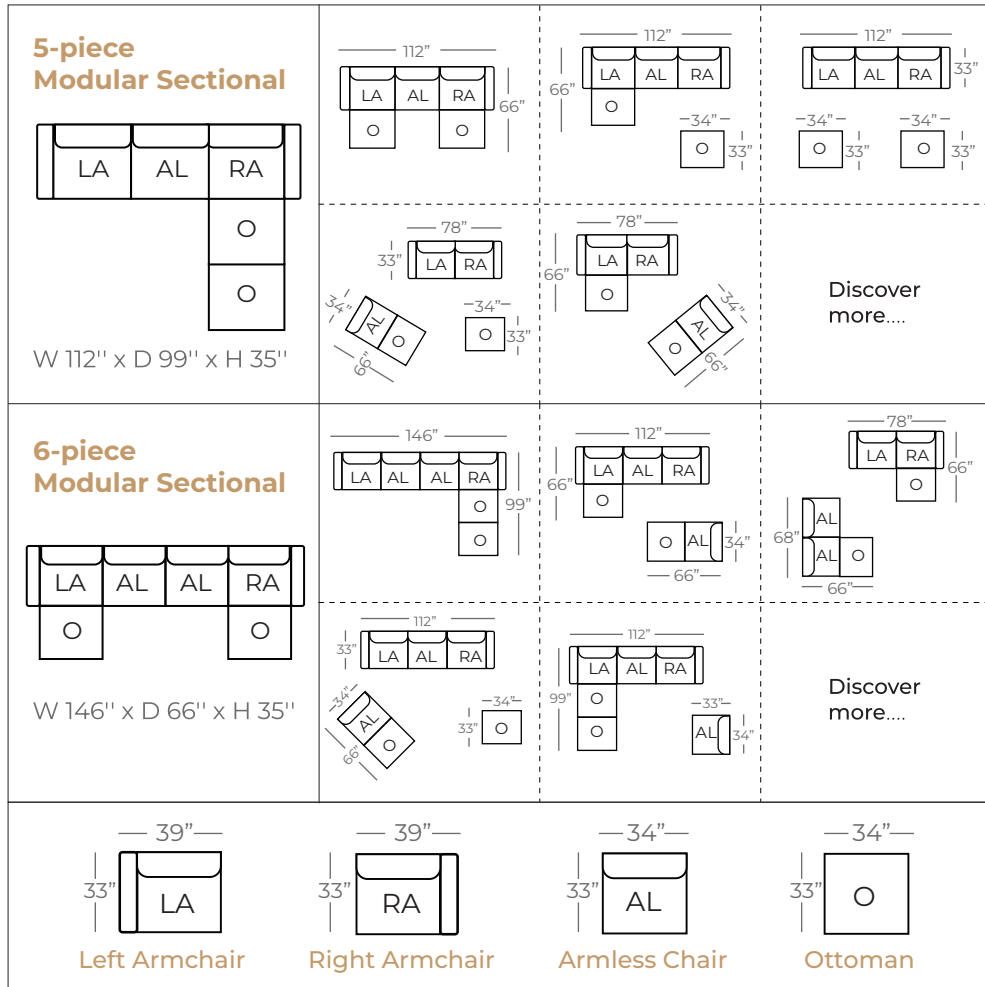
Step 1: Put the chairs side by side, with the base of the chair facing you.
Step 2: Attach the Metal Connectors by screwing on the legs firmly. You may have a few extra Metal Connectors left over. They are included in case you want to connect additional modules in the future. We recommend storing them in the little zip-top bag in case you decide to expand your Delaney later.

Note: Ottoman is a standalone piece and cannot be attached to any chair with Metal Connectors.



Modular Sofa Multiple Configurations





Discover more....

Discover more....

Care Instruction

For non-removable areas:

Blot and spot clean immediately with a clean, absorbent cloth and a water-free stain remover (Cleaning Code: S).

For cushion covers:

- Ⓟ Dry clean only.
- ☒ Do not tumble dry.
- ☒ Do not bleach.
- ☒ Iron at low temperature (230°F / 110°C or below).